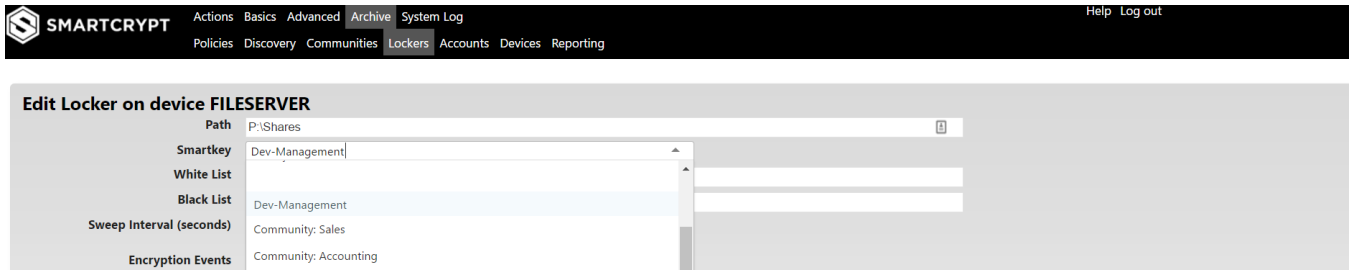
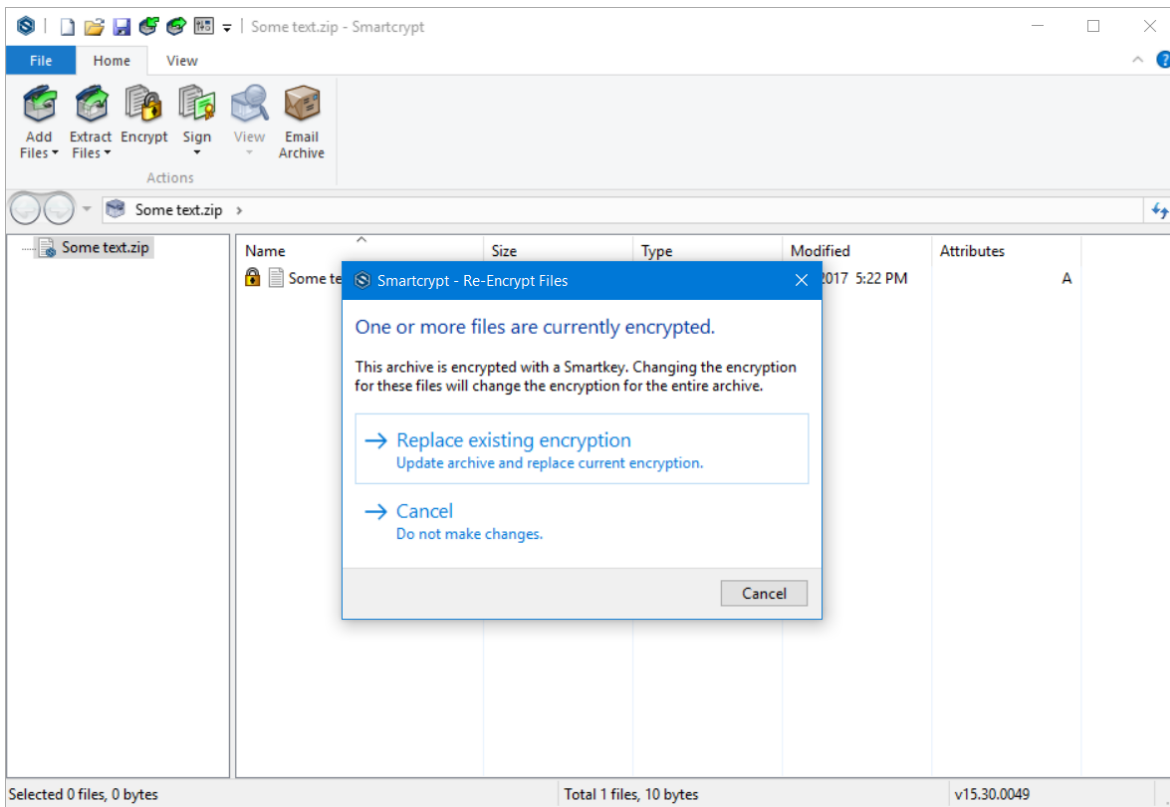


Smartcrypt Key Rotation

If you want to rotate keys on a Smartcrypt Locker, simply change which Smartkey is assigned to the locker. The locker will update and start using the new key:



To rotate a key on an individual archive, select a different smartkey and save the archive.



Enter Passphrase and/or Choose Keys for Encryption

Passphrase:

Confirm passphrase:

Encrypt with a Key:

Key	Owner/Issuer
Default Keys	
Smartkeys	
Community: Employees	
Personal Smartkey	
Personal Certificates	
Other Local Certificates	

View

New Smartkey...

Encrypt Do not encrypt Cancel Help